

# FLOOR PLANS



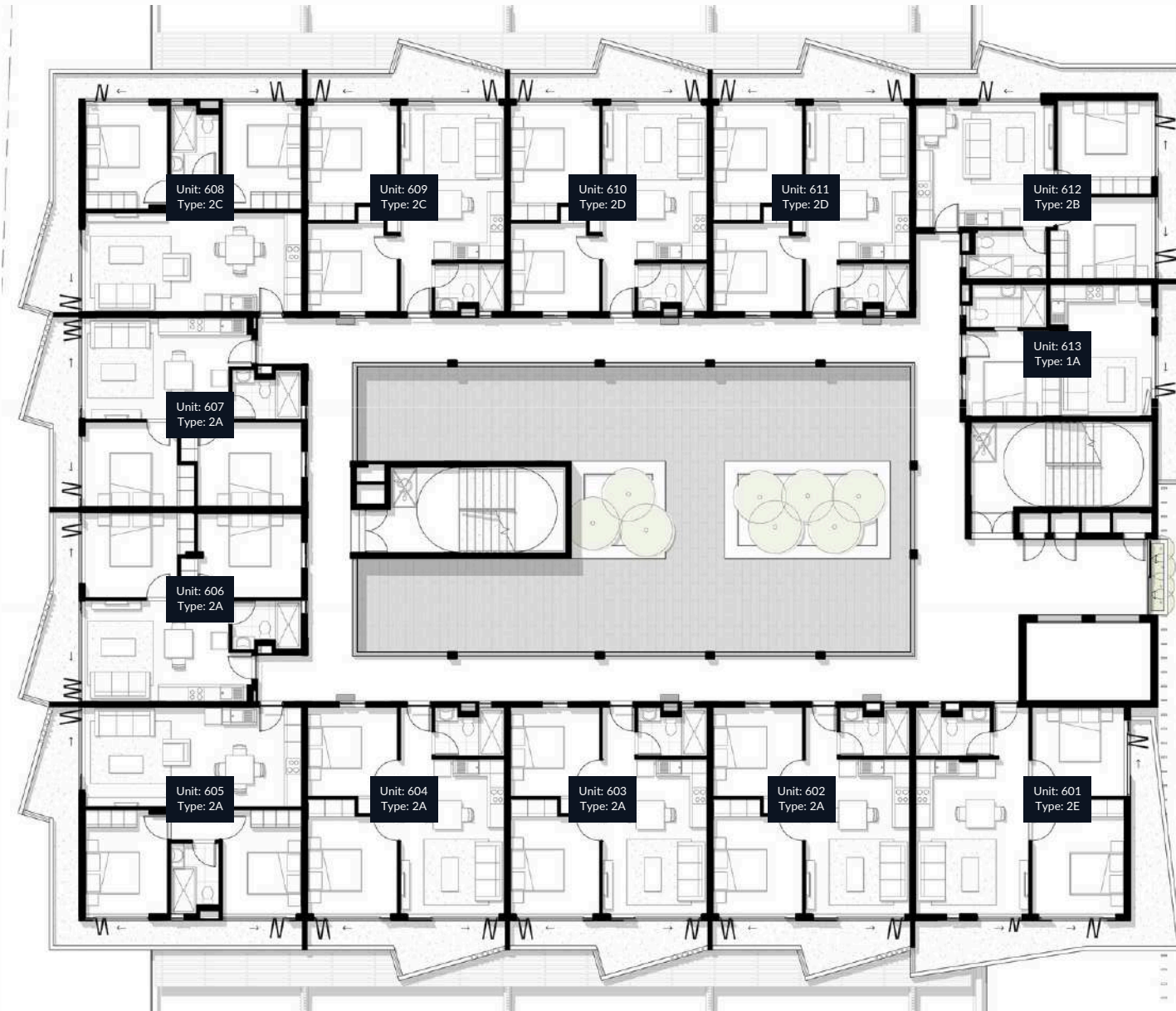
## SITE DEVELOPMENT - LEVEL 4

THIS DRAWING HAS BEEN PRODUCED PRIOR TO THE COMPLETION OF CONSTRUCTION AND IS INDICATIVE ONLY.



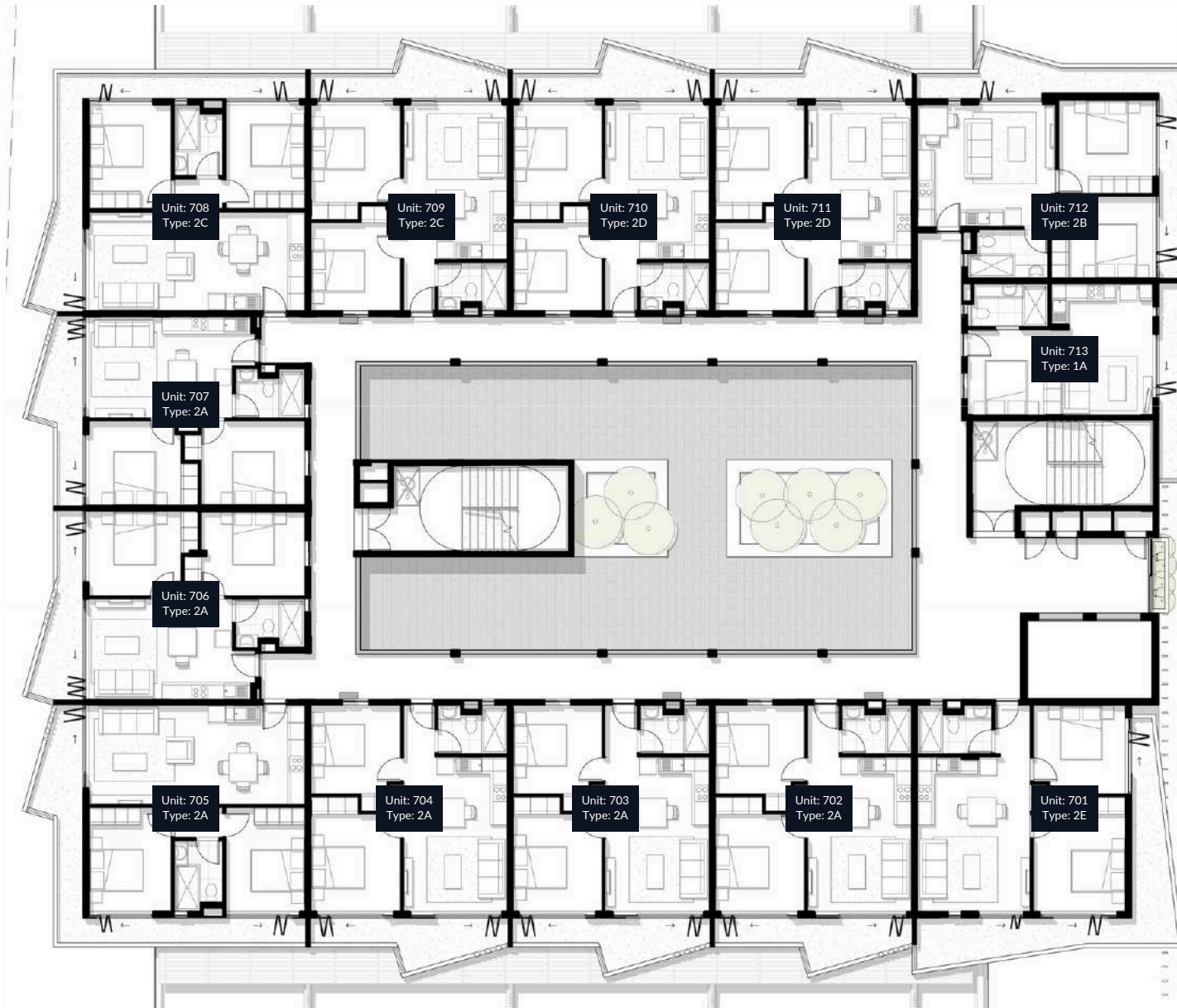
## SITE DEVELOPMENT - LEVEL 5

THIS DRAWING HAS BEEN PRODUCED PRIOR TO THE COMPLETION OF CONSTRUCTION AND IS INDICATIVE ONLY.

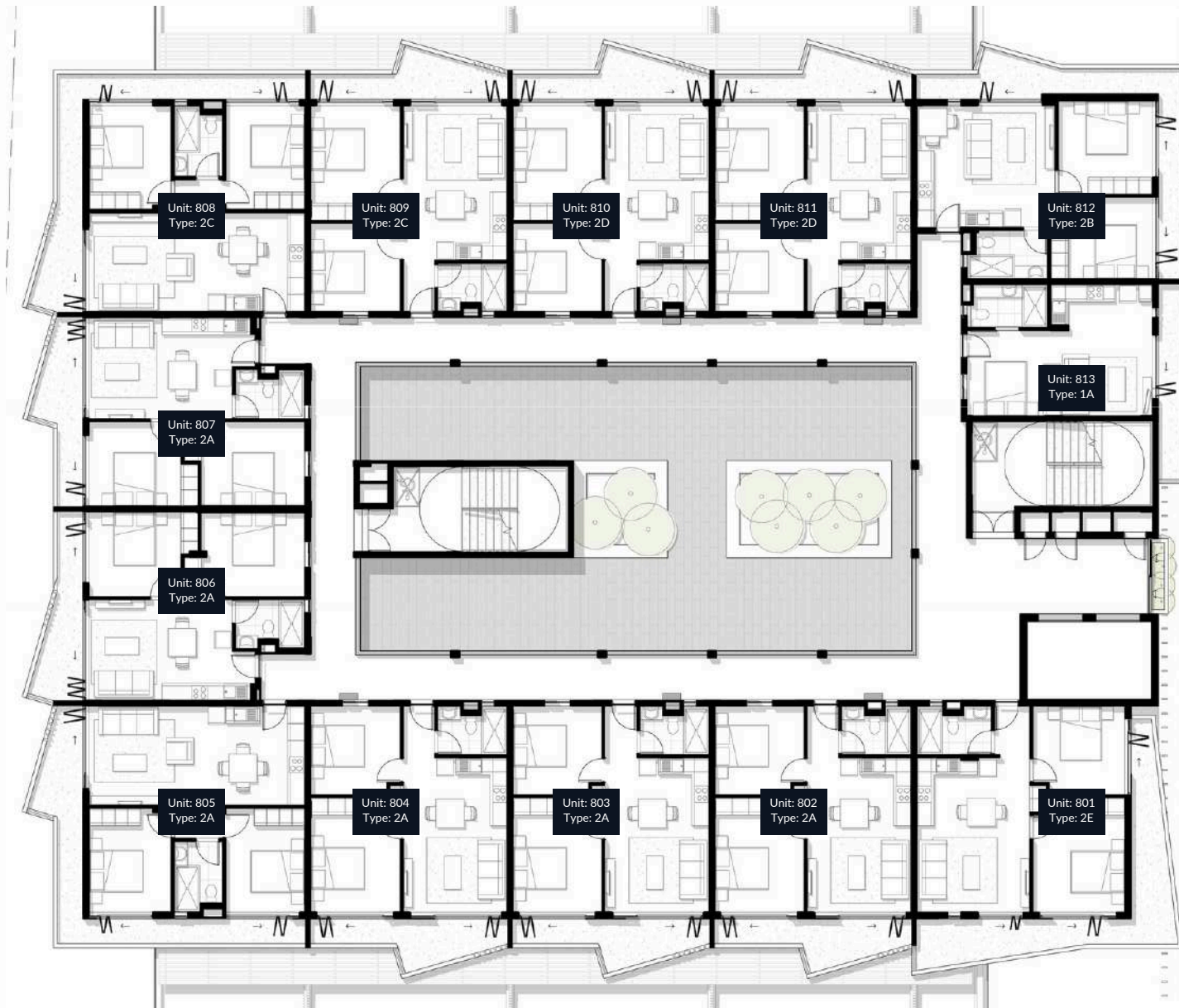


## SITE DEVELOPMENT - LEVEL 6

THIS DRAWING HAS BEEN PRODUCED PRIOR TO THE COMPLETION OF CONSTRUCTION AND IS INDICATIVE ONLY.

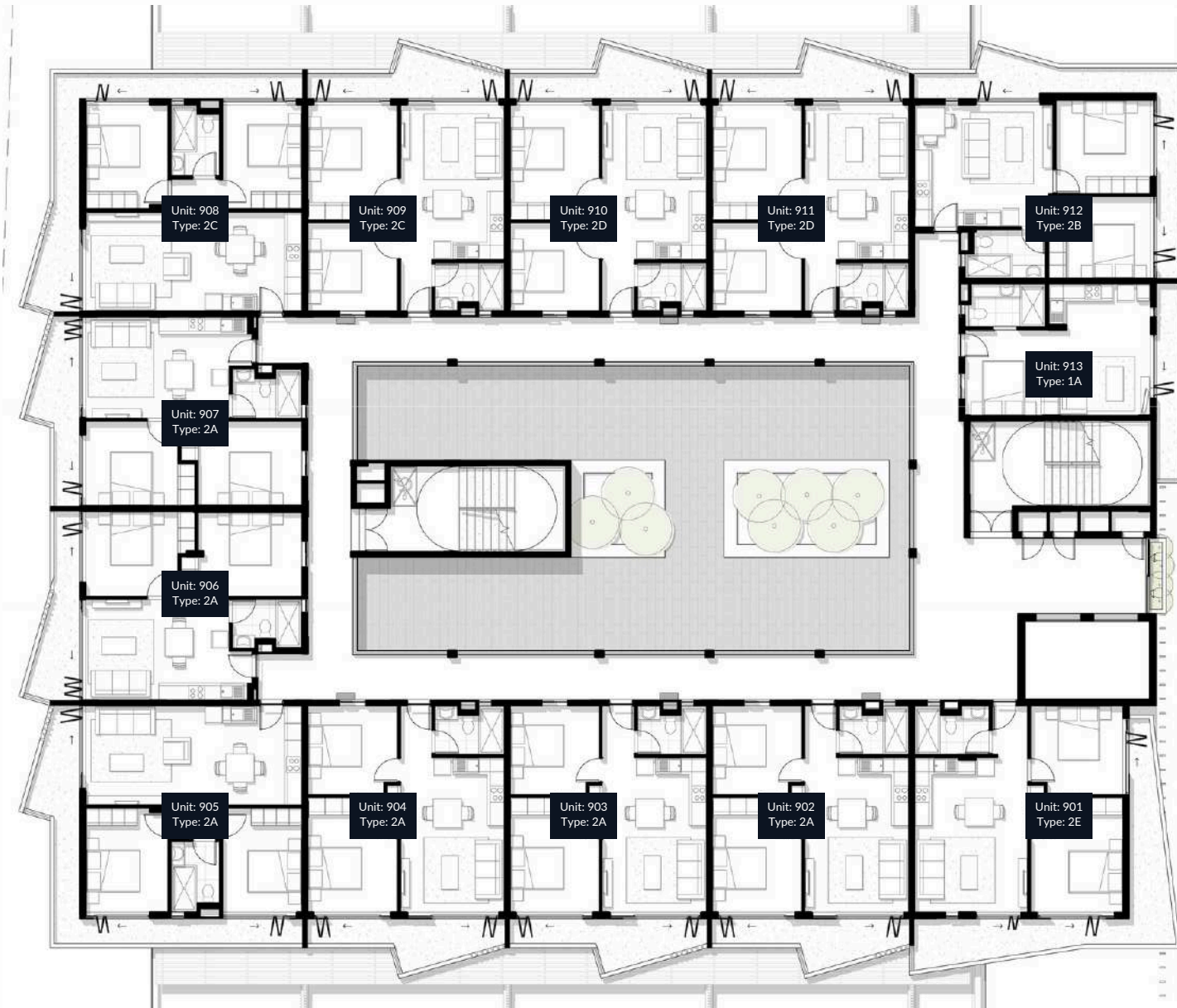






## SITE DEVELOPMENT - LEVEL 8

THIS DRAWING HAS BEEN PRODUCED PRIOR TO THE COMPLETION OF CONSTRUCTION AND IS INDICATIVE ONLY.



## SITE DEVELOPMENT - LEVEL 9

THIS DRAWING HAS BEEN PRODUCED PRIOR TO THE COMPLETION OF CONSTRUCTION AND IS INDICATIVE ONLY.



## SITE DEVELOPMENT - LEVEL 10

THIS DRAWING HAS BEEN PRODUCED PRIOR TO THE COMPLETION OF CONSTRUCTION AND IS INDICATIVE ONLY.

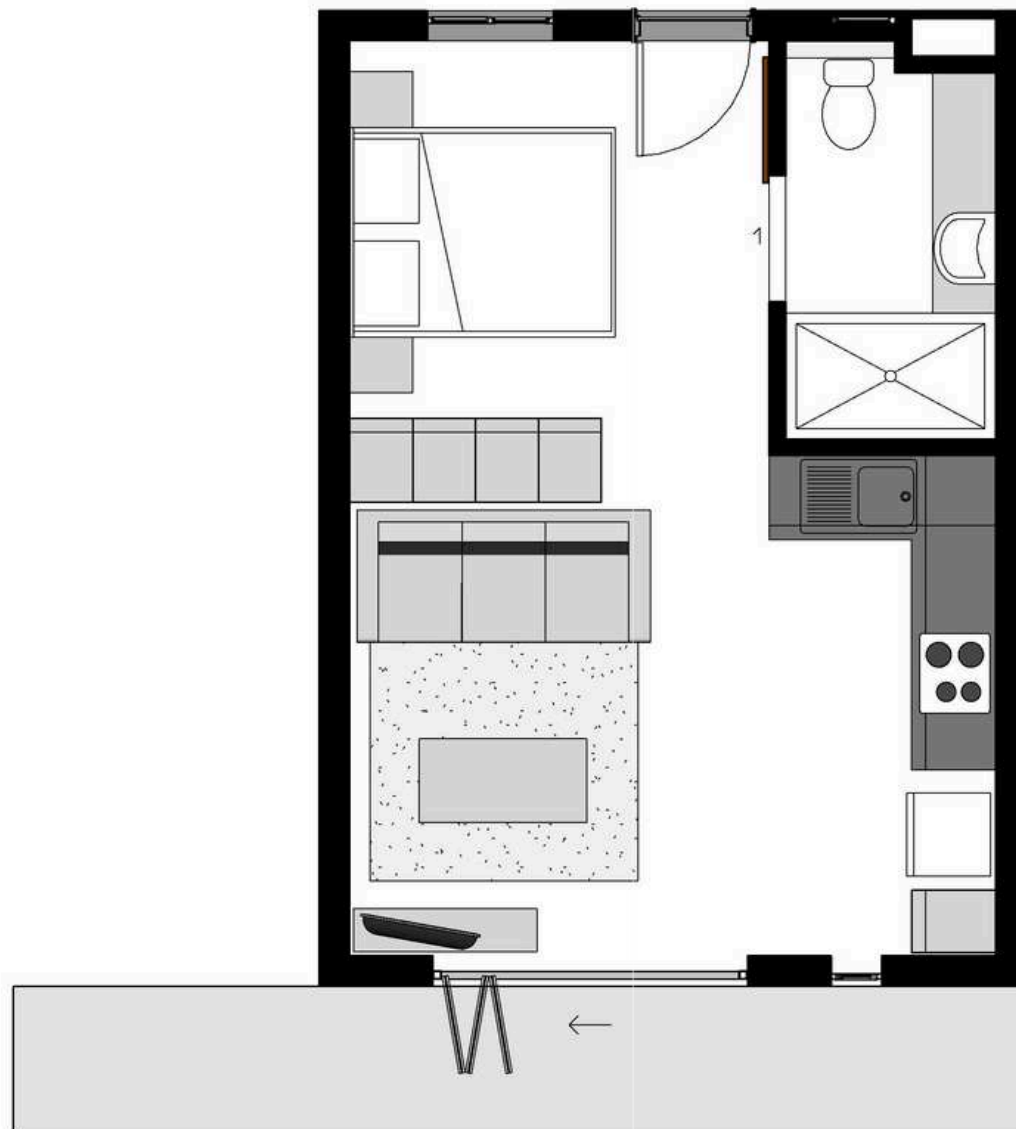


ROSEBANK  
**TWENTY 1**  
APARTMENTS

**TYPE - 1A**

 1 BEDROOM  1 BATHROOM

Unit	33m <sup>2</sup>
Balcony	8m <sup>2</sup>
<b>Total Area</b>	<b>41m<sup>2</sup></b>



ROSEBANK  
**TWENTY 1**  
APARTMENTS

**1 BEDROOM APARTMENT**

**TYPE - 1B**

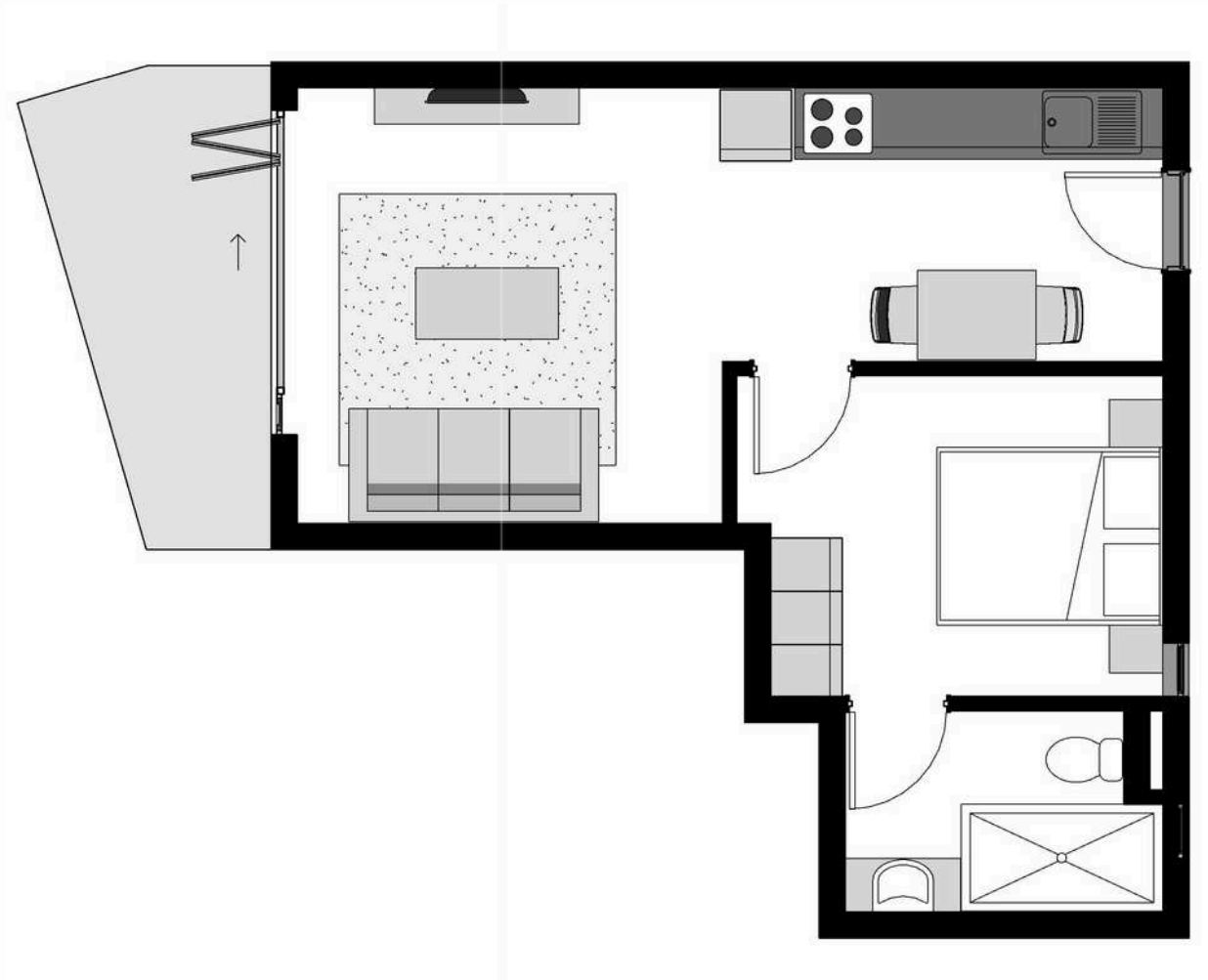


1 BEDROOM



1 BATHROOM

Unit	39m <sup>2</sup>
Balcony	6m <sup>2</sup>
Total Area	45m <sup>2</sup>



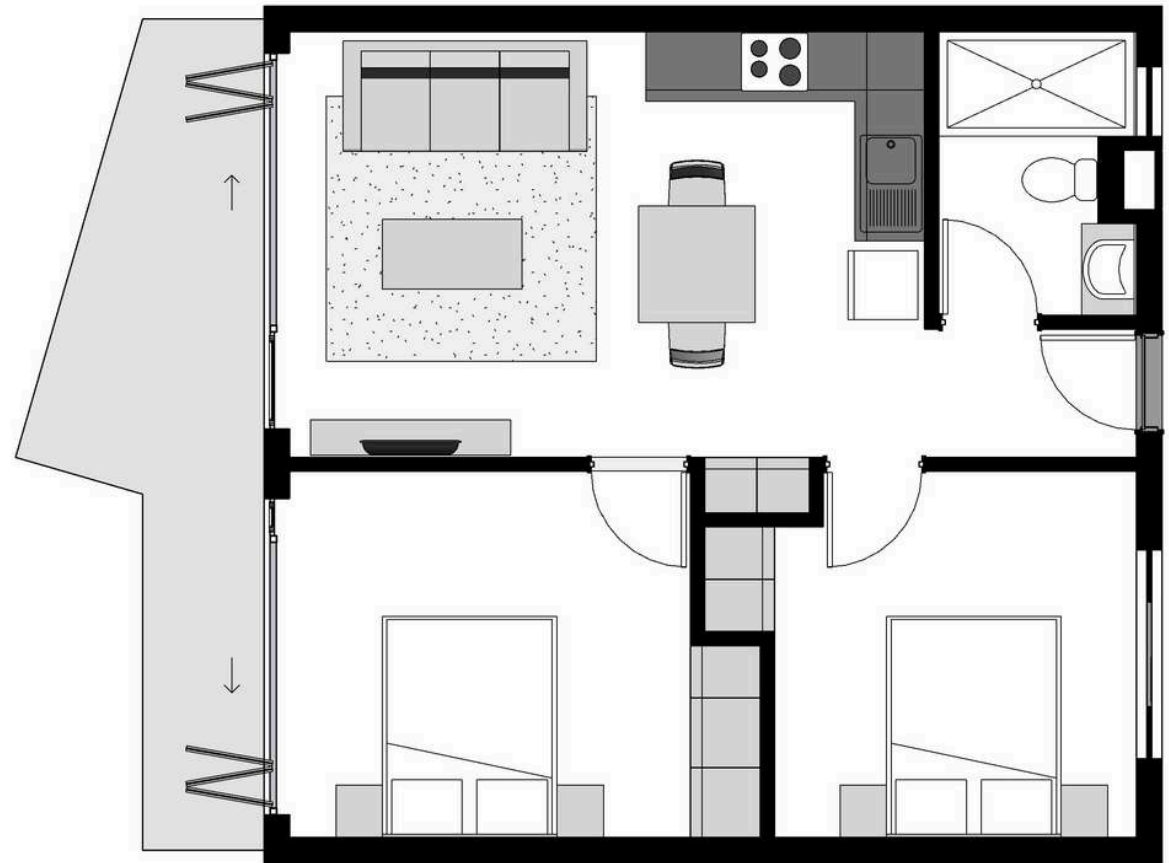
ROSEBANK  
**TWENTY 1**  
APARTMENTS

**2 BEDROOM APARTMENT**

**TYPE - 2A**

 2 BEDROOM  1 BATHROOM

Unit	53m <sup>2</sup>
Balcony	10m <sup>2</sup>
Total Area	63m <sup>2</sup>



ROSEBANK  
**TWENTY 1**  
APARTMENTS

**2 BEDROOM APARTMENT**

**TYPE - 2B**

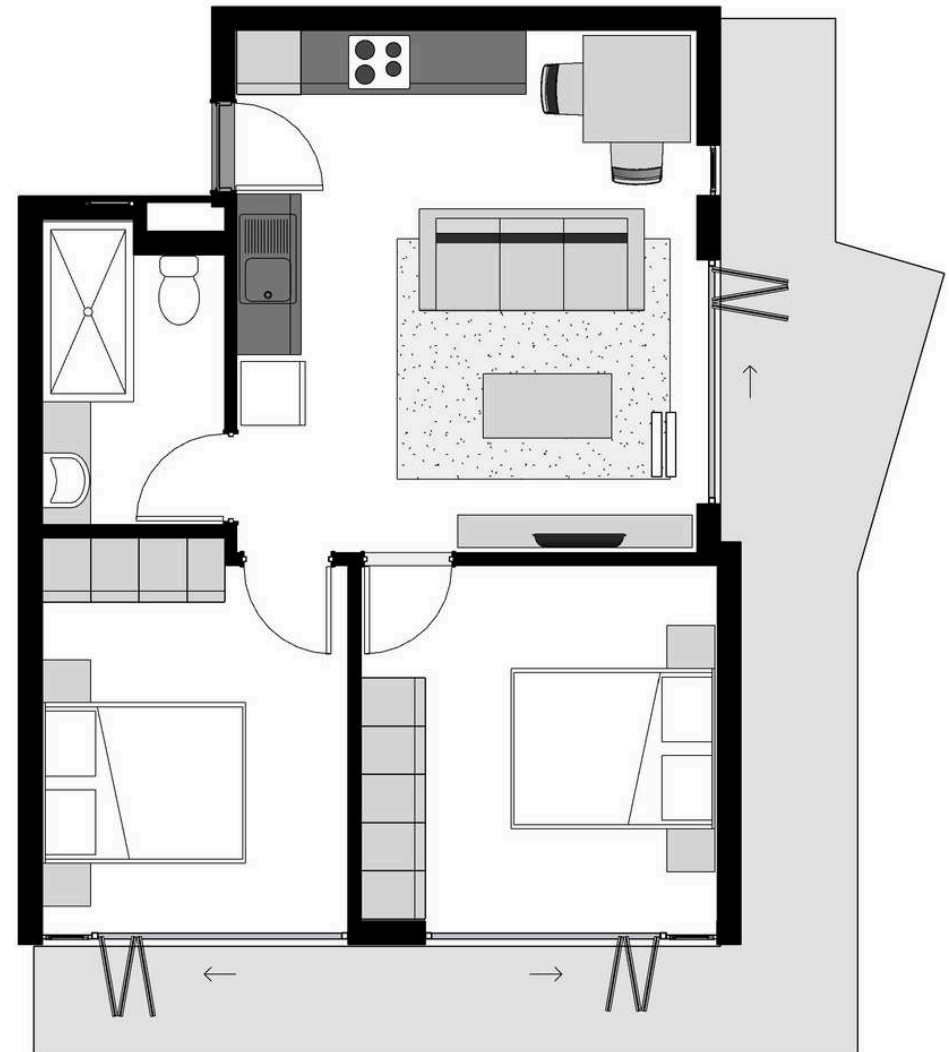


2 BEDROOM



1 BATHROOM

Unit	51m <sup>2</sup>
Balcony	20m <sup>2</sup>
Total Area	71m <sup>2</sup>



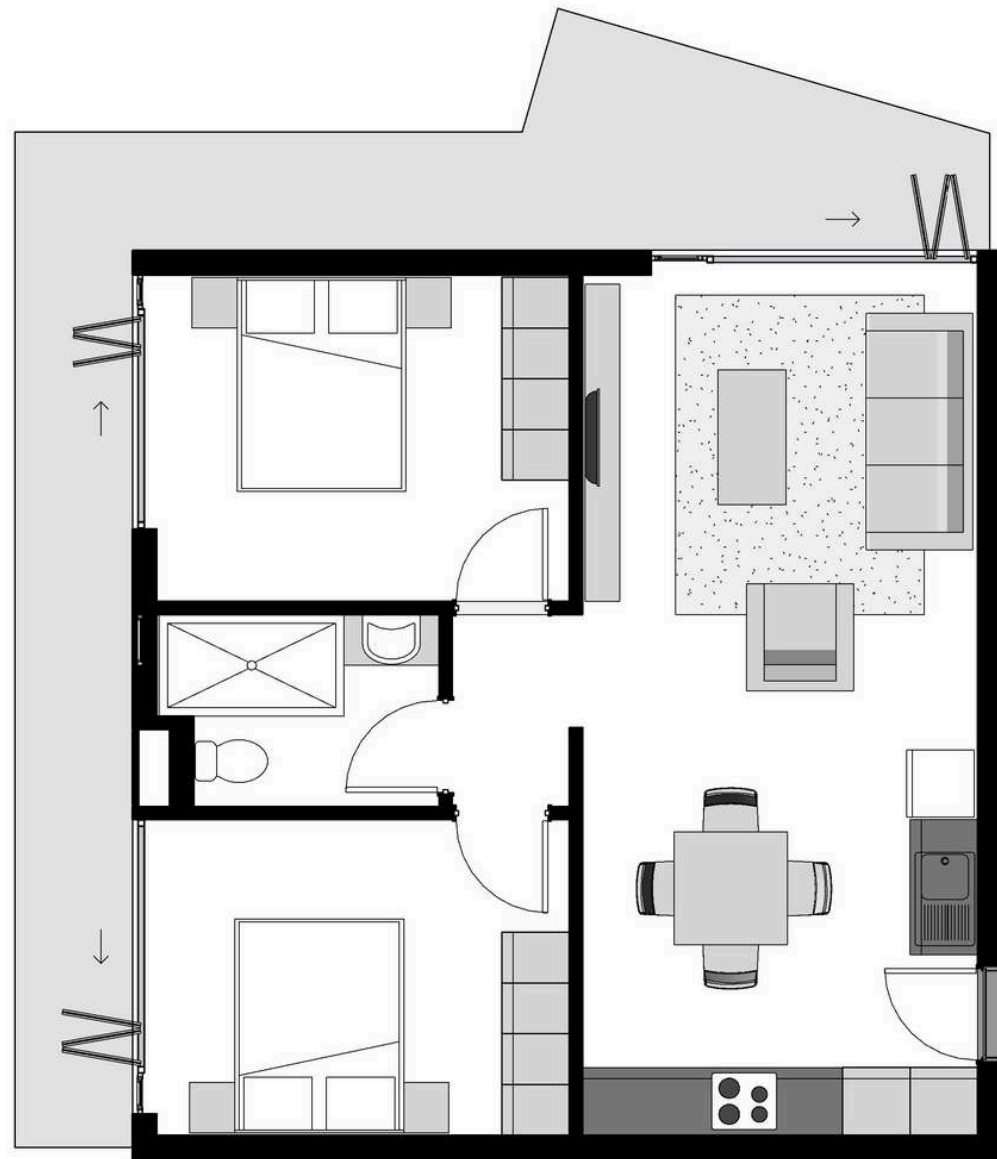
ROSEBANK  
**TWENTY 1**  
APARTMENTS

**2 BEDROOM APARTMENT**

**TYPE - 2C**

 2 BEDROOM  1 BATHROOM

Unit	59m <sup>2</sup>
Balcony	20m <sup>2</sup>
Total Area	79m <sup>2</sup>





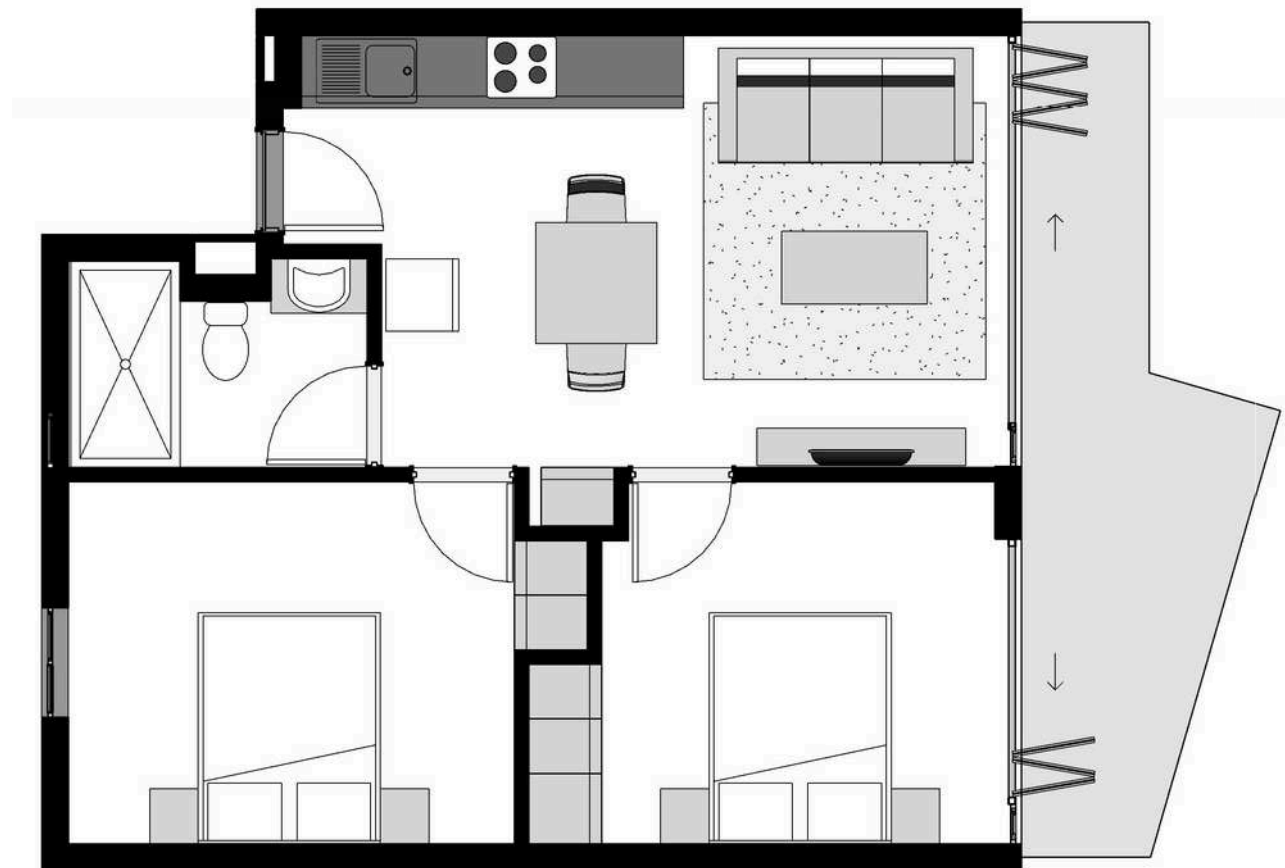
ROSEBANK  
**TWENTY 1**  
APARTMENTS

**2 BEDROOM APARTMENT**

**TYPE - 2D**

 **2 BEDROOM**  **1 BATHROOM**

Unit	50m <sup>2</sup>
Balcony	10m <sup>2</sup>
<b>Total Area</b>	<b>60m<sup>2</sup></b>



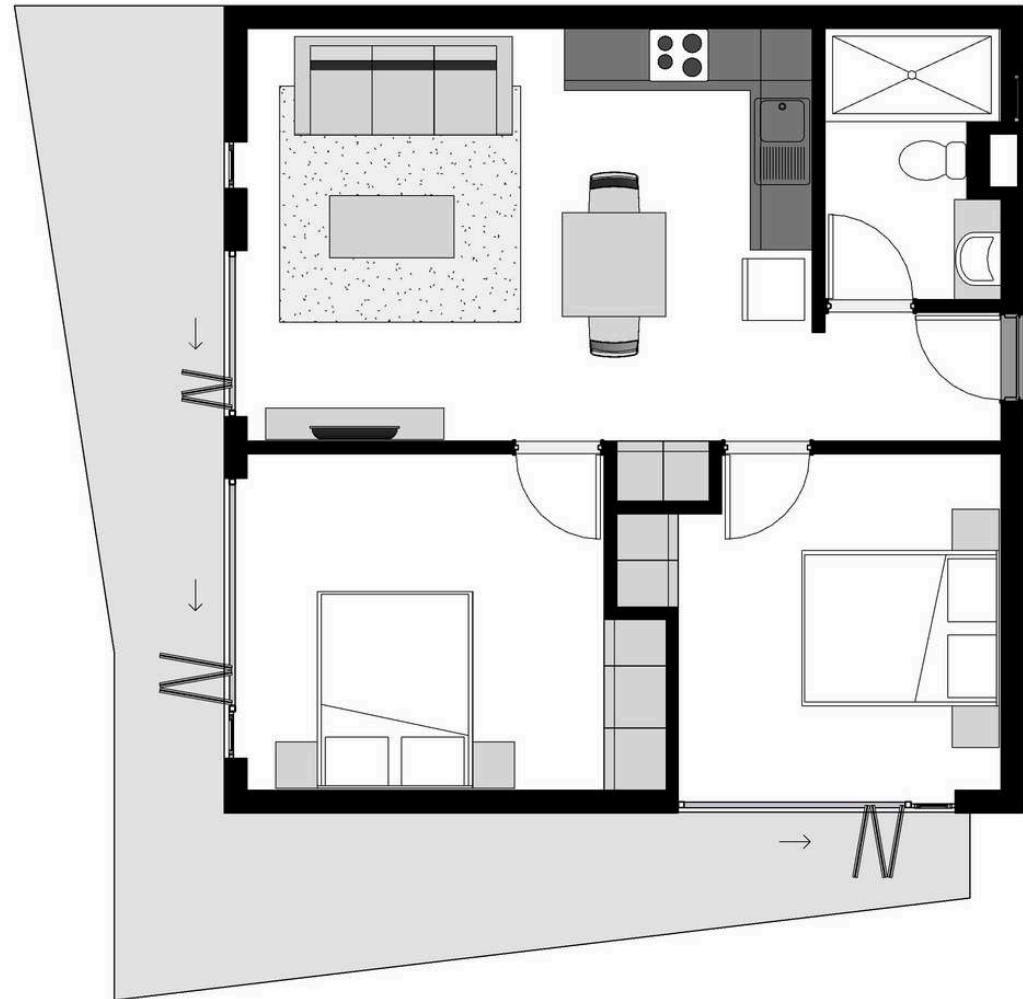
ROSEBANK  
**TWENTY 1**  
APARTMENTS

**2 BEDROOM APARTMENT**

**TYPE - 2E**

 **2 BEDROOM**  **1 BATHROOM**

Unit	57m <sup>2</sup>
Balcony	22m <sup>2</sup>
<b>Total Area</b>	<b>79m<sup>2</sup></b>



ROSEBANK  
**TWENTY 1**  
APARTMENTS

**2 BEDROOM APARTMENT**

**TYPE - 2F**

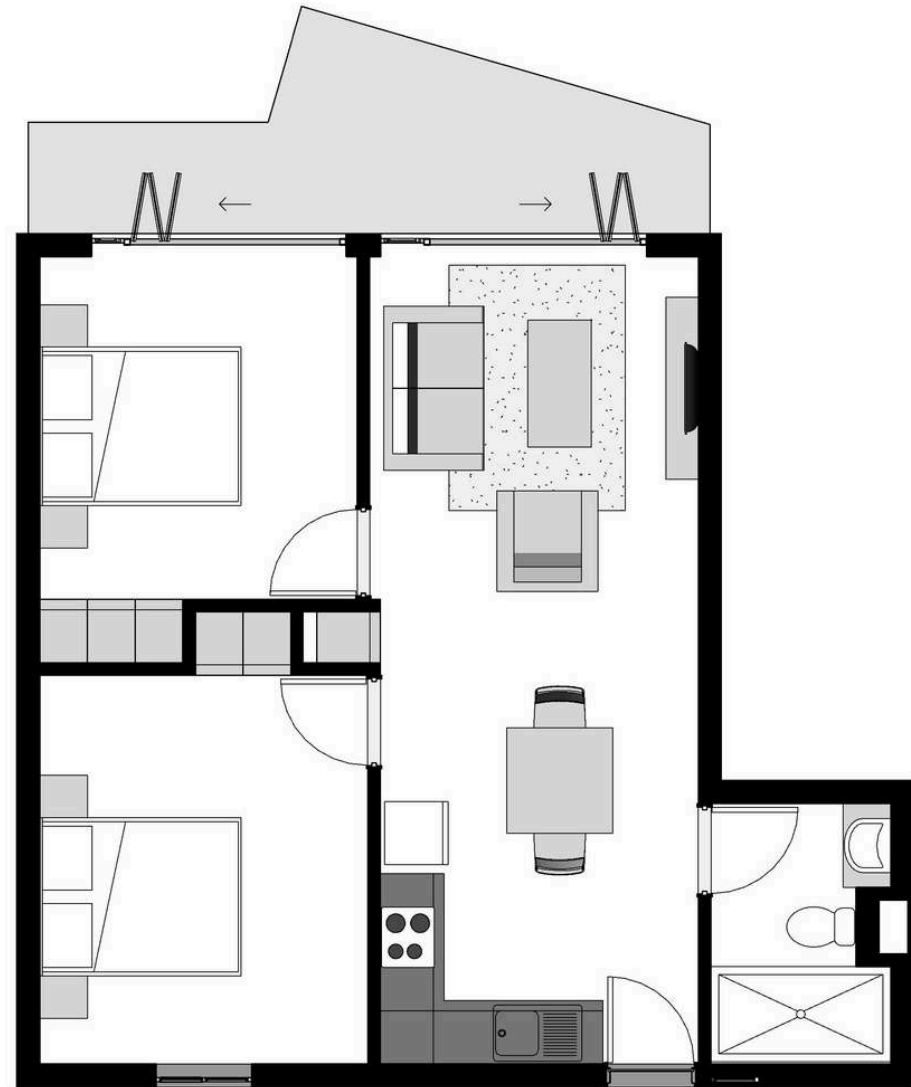


**2 BEDROOM**



**1 BATHROOM**

Unit	55m <sup>2</sup>
Balcony	9m <sup>2</sup>
<b>Total Area</b>	<b>64m<sup>2</sup></b>



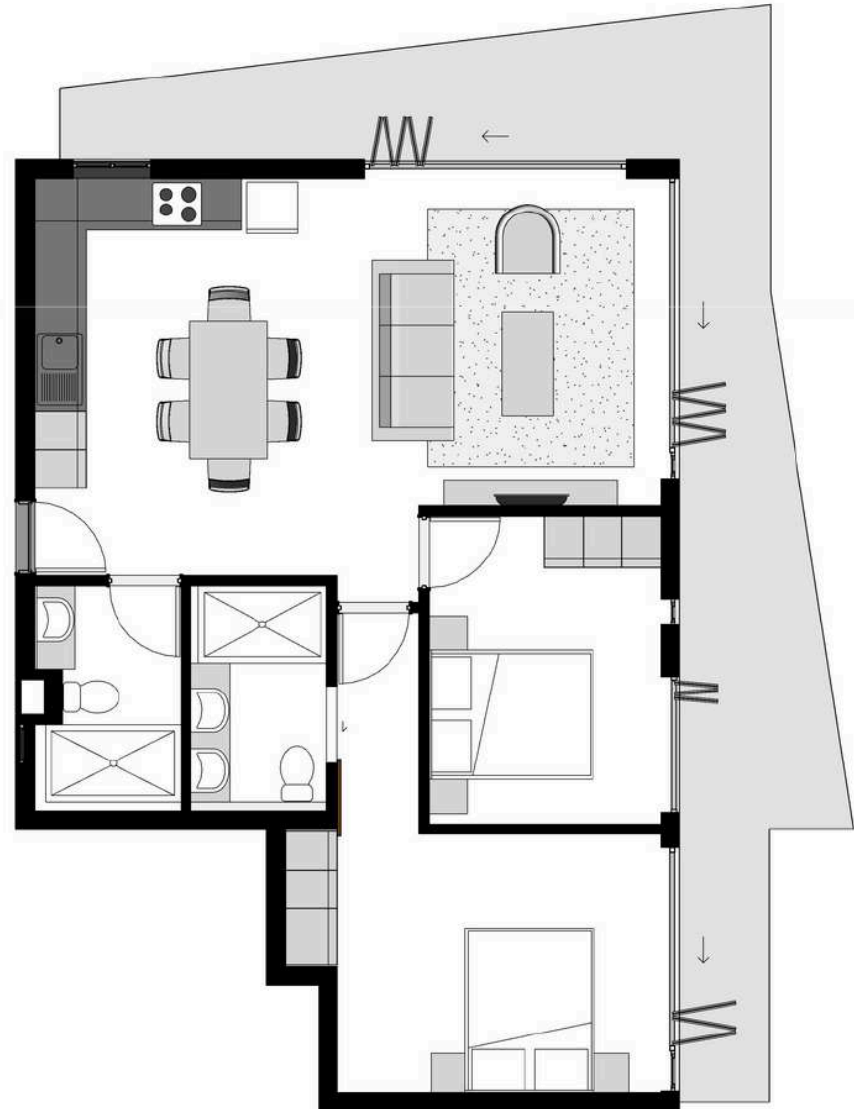
ROSEBANK  
**TWENTY 1**  
APARTMENTS

**PENTHOUSE**

**TYPE - 3A**

 2 BEDROOM  2 BATHROOM

Unit	71m <sup>2</sup>
Balcony	26m <sup>2</sup>
Total Area	97m <sup>2</sup>



ROSEBANK  
**TWENTY 1**  
APARTMENTS

**PENTHOUSE**

**TYPE - 3B**

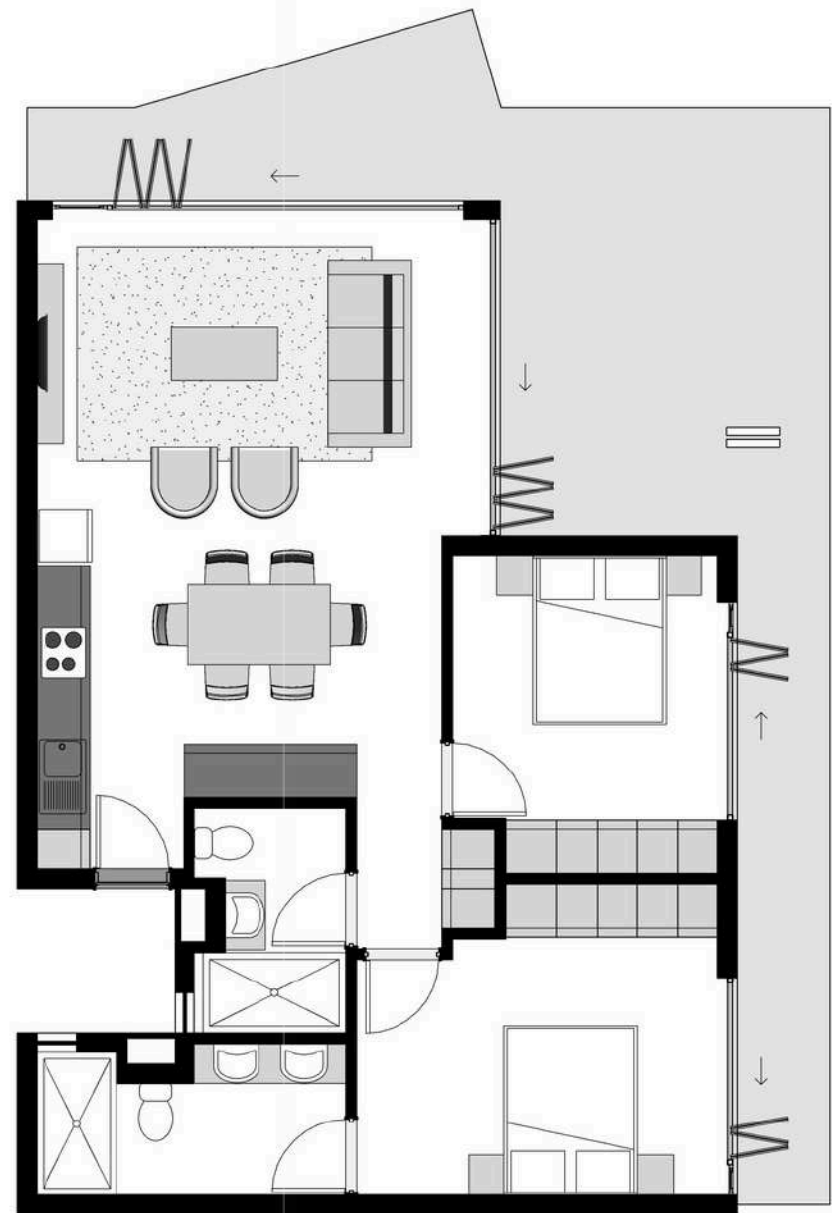


2 BEDROOM



2 BATHROOM

Unit	74m <sup>2</sup>
Balcony	33m <sup>2</sup>
Total Area	107m <sup>2</sup>





ROSEBANK  
**TWENTY 1**  
APARTMENTS

**PENTHOUSE**

**TYPE - 3C**

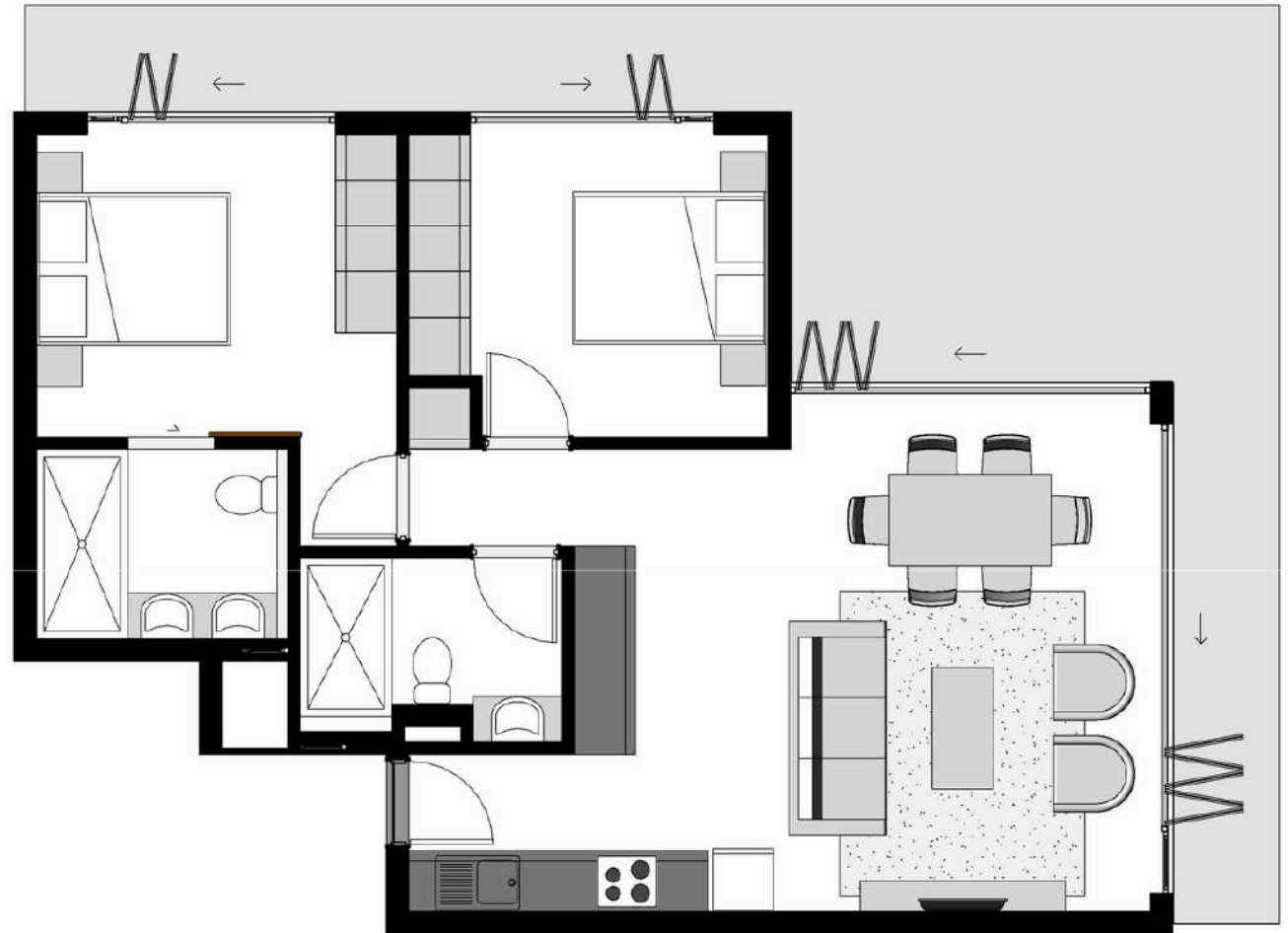


2 BEDROOM



2 BATHROOM

Unit	69m <sup>2</sup>
Balcony	31m <sup>2</sup>
Total Area	100m <sup>2</sup>



ROSEBANK  
**TWENTY 1**  
APARTMENTS

**PENTHOUSE**

**TYPE - 3D**

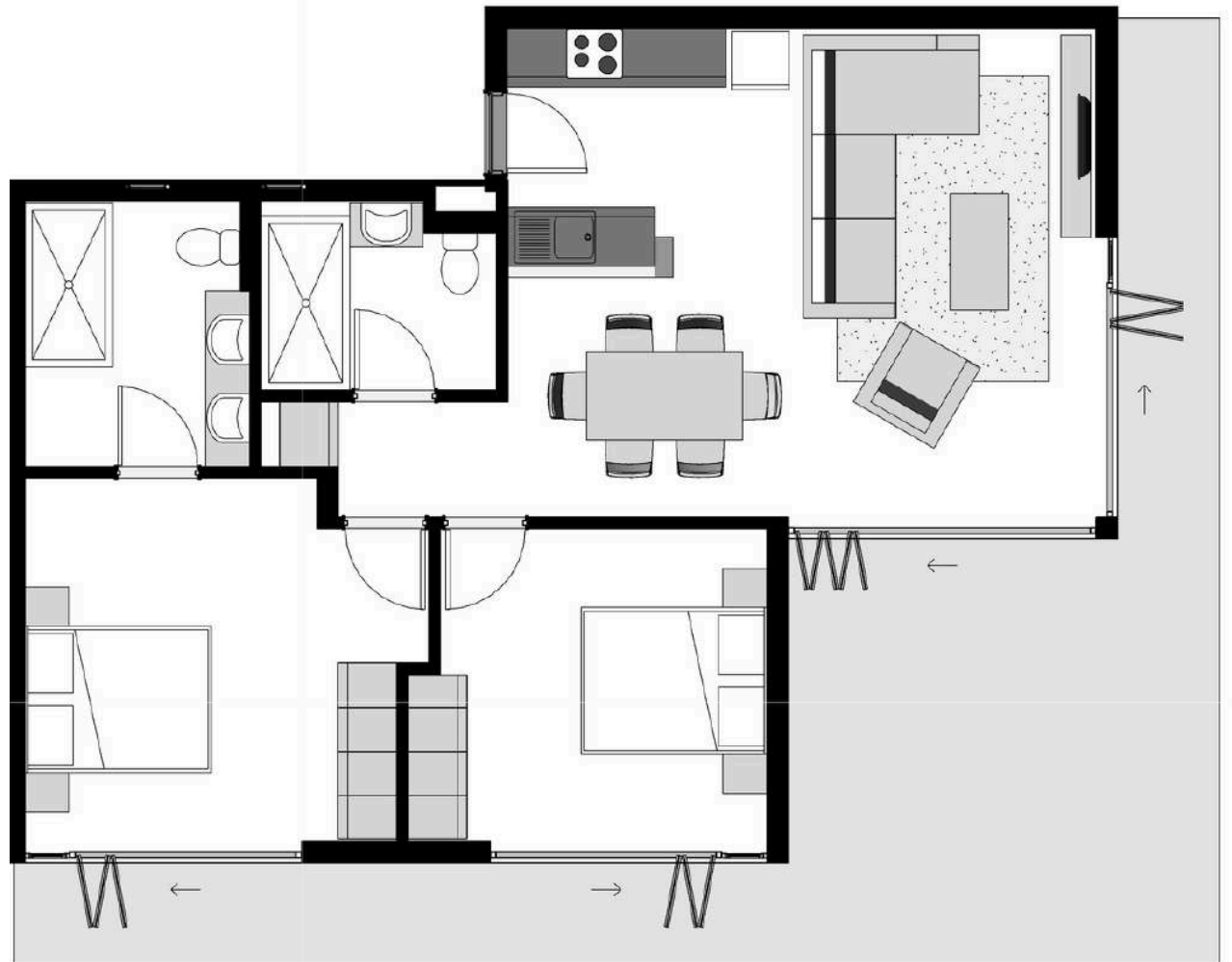


2 BEDROOM



2 BATHROOM

Unit	75m <sup>2</sup>
Balcony	33m <sup>2</sup>
Total Area	108m <sup>2</sup>



ROSEBANK  
**TWENTY 1**  
APARTMENTS

**PENTHOUSE**

**TYPE - 3D**



2 BEDROOM



2 BATHROOM

Unit	75m <sup>2</sup>
Balcony	33m <sup>2</sup>
Total Area	108m <sup>2</sup>

